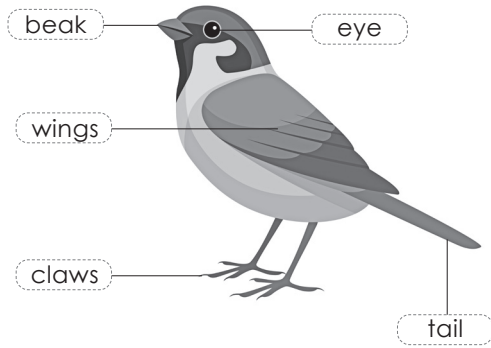


B.



Worksheet 2

- A.
1. In this type of wing movement, the wings of birds move upwards and backwards.
 2. In this type of wing movement, the wings of birds move downwards and forwards.

- B.
3. Body feathers are slightly bigger than the down feathers. They also cover the bird's body. Body feathers give a definite shape to the bird's body.
 4. Down feathers are small and fluffy. They cover the bird's body and keep it warm.
 5. Flight feathers are long and flat. They are attached to the wings and tail. These feathers help the bird fly.
- B.
1. Birds fly with the help of their wings. They have a light body and hollow bones. The feathers present on their wings also help them in flying.
 2. Eagles and owls are called birds of prey as these birds hunt and eat small animals such as mice, frogs and snakes.