

Answers

Theme 6: How Was Our Country Made? Lesson-9: The Plant and Animal Life of India

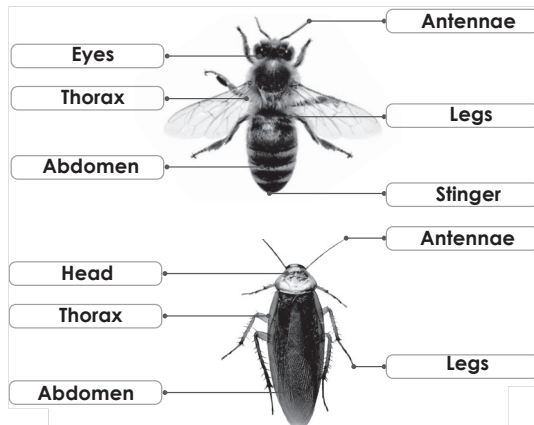
Main Coursebook

Kinaesthetic: Accept all relevant responses

Auditory:

1. The roots were like strong hands, holding the plant tight in the soil.
2. Leaves are important for a plant as they absorb the sunlight to make food for the plant.

Pictorial



Interacting better: Accept all relevant responses

Understanding better (Page 63)

1. Yes 2. No

Understanding better (Page 64)

1. No 2. No

Learning better

- A. 1. b 2. b 3. c 4. a 5. c

- B. 1. True 2. False 3. True
4. False 5. False

- C. 1. Plant life on the Earth is known as flora and animal life is called fauna.

2. These animals live in the ocean water.

3. Indian mountains: Snow leopard

Plains: Deer

Indian waters: Whale

Thar: Blackbuck

- D. 1. **Flora in the mountains:** Trees, such as pine, spruce and maple, are found in the mountain areas.

Flora on coastal plains: Coastal plains have plants, such as lupine and horsetail. Trees, such as oak and magnolia, are found here. Some non-flowering plants, such as ferns and mosses, are also found in these areas.

2. **Animals in the deserts:** Animals, such as blackbuck, desert fox and Indian gazelle, are found in the Thar desert. Birds, such as harriers, falcons, kestrels and vultures, are also found in the Thar desert.

Animals on the plains: Most of the animals that live on the plains are herbivores, such as bison, deer

and elk. Such animals, especially bison, move in large groups called herds. Birds, such as the yellow-headed blackbird and chestnut-collared longspur, are also found in the plains.

Creating better: Accept all relevant responses

Thinking better: If the animals in the Thar Desert had thick fur, they would feel very hot because the fur would trap heat. This would make it hard for them to survive in the desert's extreme heat.

Choosing better: 2. Unity as strength

Students' Worksheets

Worksheet 1

- | | | |
|-------------|------------------|----------|
| A. 1. flora | 2. fauna | 3. India |
| 4. 47,513 | 5. 11.4 per cent | |
| B. 1. False | 2. False | 3. True |
| 4. True | 5. False | |
| C. 1. PINE | 2. SPRUCE | 3. MAPLE |
| 4. DEODAR | 5. ASTERS | |

Worksheet 2

- | | |
|-------------------|----------------------|
| A. 1. plains | 2. coastal plains |
| 3. water; fertile | 4. Thar |
| 5. coastal plains | |
| B. 1. True | 2. True 3. False |
| 4. True | 5. False |
| C. 1. FLORA | 2. FAUNA 3. HABITATS |
| 4. PLANT | 5. SUNFLOWERS |

Worksheet 3

- | | | |
|-------------|------------------|--------------|
| A. 1. 2,000 | 2. 90,000 | 3. mountains |
| 4. plains | 5. Indian waters | |
| B. 1. False | 2. False | 3. True |
| 4. True | 5. True | |
| C. 1. → e | 2. → c | 3. → a |
| 4. → b | 5. → d | |

Book of Holistic Teaching

Developing better

- A. **English:** In the national park, Khushi is cheerful after seeing the beautiful flowers moving in the wind like they are waving at her. She also sees a sandal tree which has a mesmerising fragrance. The keeper of the park tells her that the wood of the sandal tree is very expensive.

- B. **Maths:** 0.4

- C. **Social Studies:** The Himalayas are home to diverse flora and fauna due to their unique climate and geography.

Flora: Rhododendrons, Deodar trees

Fauna: Snow Leopard, Red Panda

Book of Project Ideas

Making better: Accept all relevant responses.